



LW5360



crochet

What you will need:

RED HEART® Super Saver®:
7 skeins 319 Cherry Red **A**,
6 skeins 311 white **B**

Susan Bates® Crochet Hook:
5 mm [US H-8]

Yarn needle

GAUGE: Rows 1-11 = 6" (15 cm)
across straight edge. **CHECK
YOUR GAUGE.** Use any size
hook to obtain the gauge
given.

BUY YARN



RED HEART® Super Saver®, Art. E300
available in solid
color 7 oz (198 g), 364 yd
(333 m); prints, multicolor and
heather 5 oz (141 g), 236 yd
(215 m), flecks 5 oz (141 g),
260 yds (238 m) skeins



Corner-to-Corner Snowflake Blanket

Create this beauty and use it for the holidays and every cool day throughout the year. It is crocheted in a diagonal direction starting a one corner and ending at the opposite corner. It's perfect for both modern and more traditional living areas.

Blanket measures 50 x 43"
(127 x 109 cm)

NOTES

1. Blanket is worked in a diagonal from corner to corner.
2. All right side (odd numbered rows) are worked from top right to bottom left, and all wrong side (even numbered rows) are worked from bottom left to top right.
3. Change colors on the last yarn-over of the last st of the square to the next color indicated by chart.
4. There will be many yarn ends to weave in; you may want to weave some in as you go.

BLANKET

With **A**, ch 6.

Row 1 (right side): Skip 3 ch, hdc in 4th ch from hook and in each of 2 remaining ch, turn - 1 square made.

Row 2 (wrong side): Ch 6, skip 3 ch, hdc in 4th ch from hook and in each of next 2 ch, (sc, ch 3, 3 hdc) in ch-3 space of Row 1, turn - 2 squares.

Row 3: Ch 6, skip 3 ch, hdc in 4th ch from hook and in each of next 2 ch, (sc, ch 3, 3 hdc) in each ch-3 space of previous row, turn - 3 squares.

Rows 4-75: Repeat Row 3, changing colors as indicated by chart, turn - 75 squares across last row.

Row 76: Ch 6, skip 3 ch, hdc in 4th ch from hook and in each of next 2 ch, (sc, ch 3, 3 hdc) in each ch-3 space to last space changing colors as indicated by chart, sc in last space, turn - 75 squares.

Row 77: Slip st in each of first 3 sts, (sc, ch 3, 3 hdc) in each ch-3 space of previous row changing colors as indicated by chart, including last space, turn - 75 squares.

Rows 78-87: Repeat Rows 76 and 77 five more times.

Row 88: Slip st in each of first 3 sts, (sc, ch 3, 3 hdc) in each ch-3 space of previous row to last space changing colors as indicated by chart, slip st in last space, turn - 74 squares.

Rows 89-161: Repeat Row 88, changing colors as indicated by chart - 1 square at end of Row 161. Fasten off.

FINISHING

Weave in remaining loose ends.

ABBREVIATIONS

A, B = Color A, Color B; **ch** = chain; **hdc** = half double crochet; **sc** = single crochet; **st(s)** = stitch(es); *** or **** = repeat whatever follows the * or ** as indicated.

See next 2 pages for chart and alternate photo



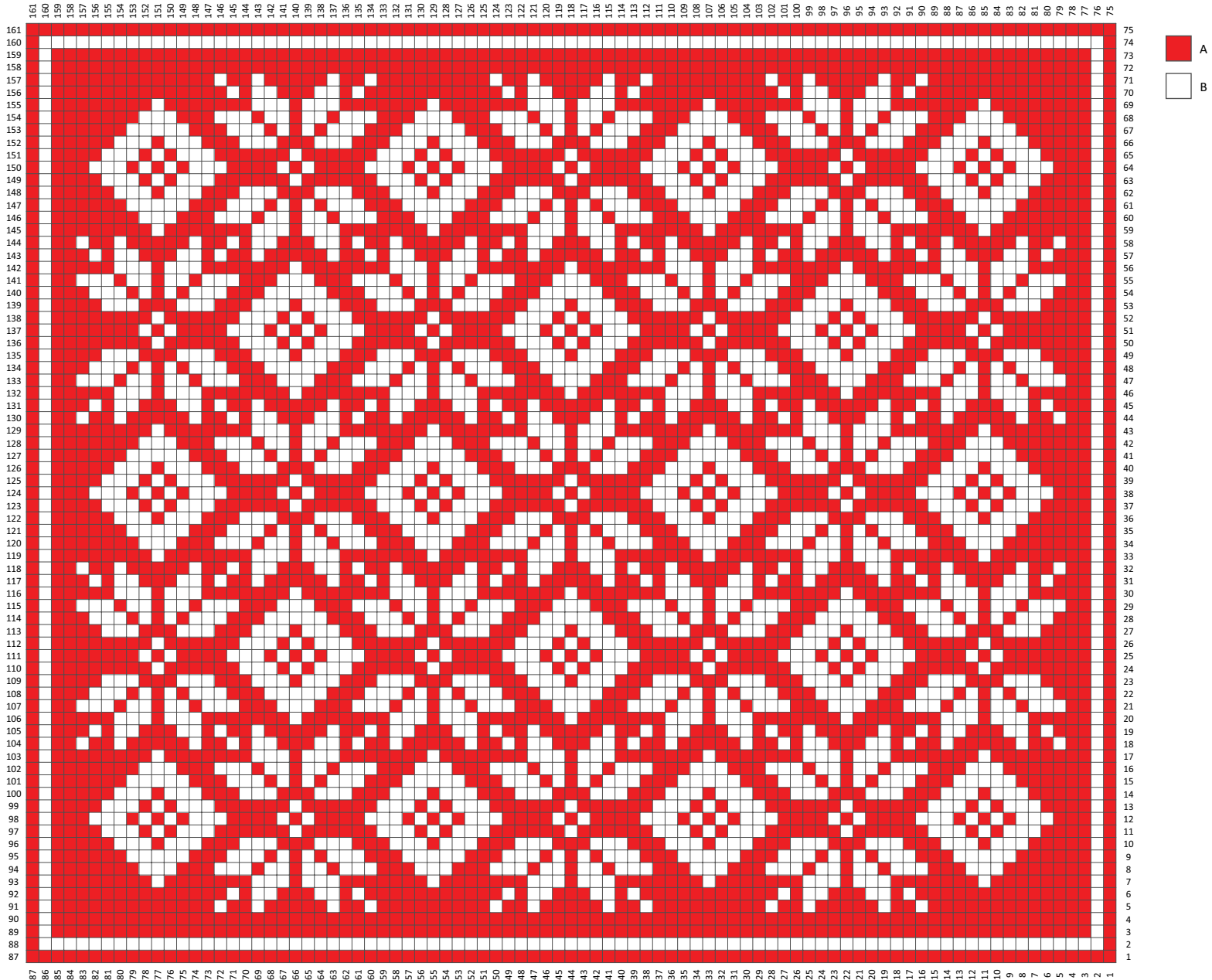
2015 & 2016
WOMEN'S CHOICE AWARD®
AMERICA'S MOST RECOMMENDED
YARN BRAND



LW5360 Corner-to-Corner Snowflake Blanket



MARLY BIRD



See next page for alternate photo



LW5360 Corner-to-Corner Snowflake Blanket



MARLY
BIRD

